

Fireworks Necklace

By Jill Wiseman

© 2014. All Rights Reserved.

Supply List

- Size 11° seed beads – 40 grams
- Size 8° seed beads – 12 grams
- Size 15° seed beads – 5 grams
- Swarovski pearls or freshwater pearls in assorted colors (450 total)
 - 4mm – 150
 - 5mm – 150
 - 6mm – 150
- Fireline - 6lb
- Size 11 or 12 beading needles



This necklace first appeared in Beadwork Magazine's August/September 2013 issue. These instructions are my more expanded and personalized version.

While I've embellished all but the top row of this netted necklace, you could create a more restrained version by only embellishing the front center of the necklace, or doing only the bottom two rows. It's your choice how fluffy it gets!

Also, I've used Swarovski pearls in multiple colors and sizes for the embellishment in the kits. The original was done in freshwater pearls. But you can certainly play with your own bead ideas for embellishment – fire polished beads, crystals, rondelles, drops.

The YouTube video walking you through the steps of this project is available at:

<http://youtu.be/pkN7mxI23GQ>

Kits are available at: www.jillwisemandesigns.com

Netted Base

First we create a netted necklace base and later we'll add all the fringes.

Note: This page shows how you start the netted base – the section which is repeated over and over to make the remainder of the base is on the next page.

Step 1

Attach a stopper bead to your thread.

Step 2

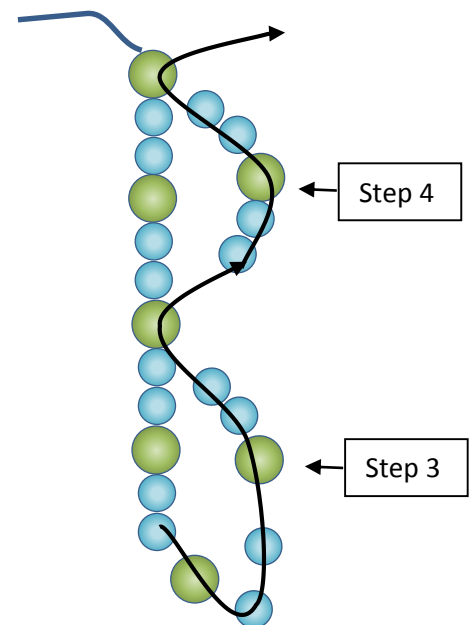
Pick up 1 size 8° and 2 size 11° beads. Repeat give more times for a total of six sets.

Step 3

Pass back towards the tail through the 3rd size 8° added.

Step 4

Pick up 2 size 11°, 1 size 8°, 2 size 11° and pass back through the first size 8° added (next to the stopper bead.) You should end up with your thread exiting the top cross-over bead along with your tail thread.

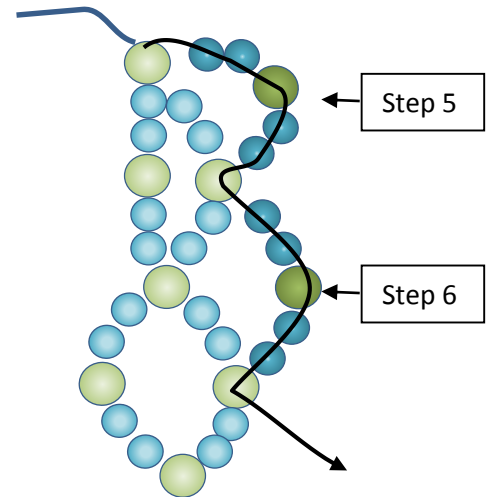


Step 5

Pick up 2 size 11°, 1 size 8°, 2 size 11° and working away from the tail, pass through the next size 8°.

Step 6

Pick up 2 size 11°, 1 size 8°, 2 size 11° and skipping one size 8°, pass through the next size 8°.



Step 7

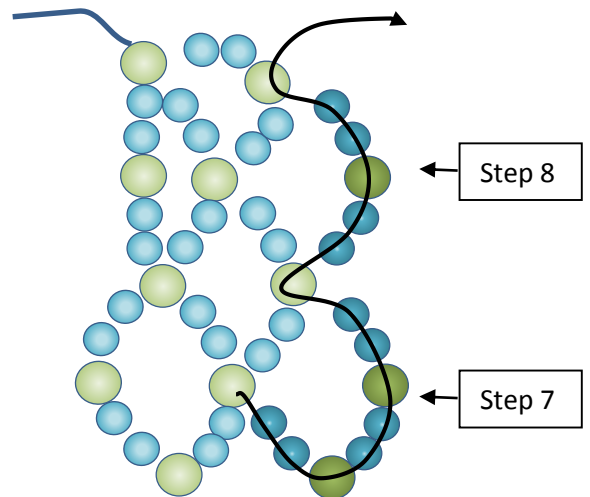
The turnaround at the bottom!

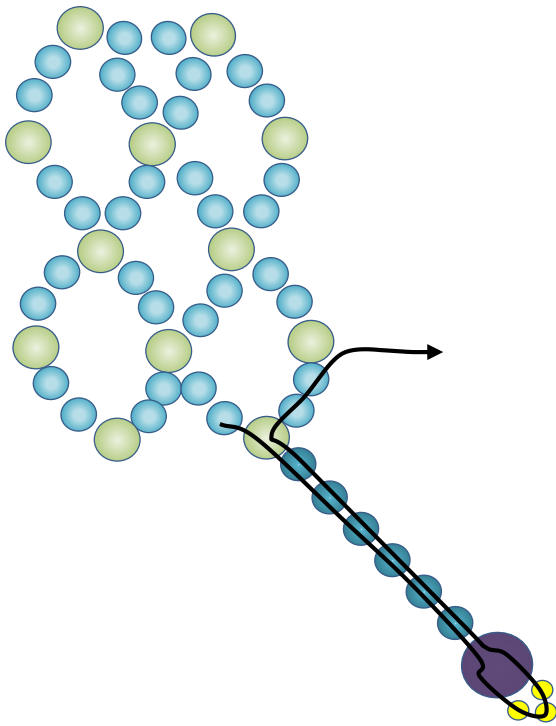
Pick up 2 size 11°, 1 size 8°, 2 size 11°, 1 size 8°, 2 size 11° and start working your way back up. Skipping one size 8°, pass through the next size 8° (the first sticky-outy cross-over bead.)

Step 8

Pick up 2 size 11°, 1 size 8°, 2 size 11° and skipping one size 8°, pass back through the next size 8° (the sticky-outy one.)

Repeat Steps 5 - 8 until you have the length you desire. The beaded toggle clasp will add about 1 inch to the overall length.





Fringing

With your thread exiting a size 8°, pick up 6 size 11° a pearl, and 3 size 15°. Pass back through the pearl and 6 size 11° and then move to next size 8°. Add a fringe to each size 8° (if desired.)

Note: there is no ideal thread path to get from one size 8° to the other. Just move around through the beads to get from spot to spot as needed.

Toggle Bar

With about three feet of thread and using the size 11° beads, peyote-stitch a strip 10 beads wide and 10 rows long. Then fold the strip like a taco along the long edge and zip the ends together.

If you need more detailed instructions on this, please download **“FREE Peyote Tube Earrings Instructions”** from my website which will step you through the process.

Embellish the Toggle Bar

Pass through the center of the peyote tube.

Pick up a pearl and one size 11° seed bead. Pass back through the pearl and the center of the tube.

Repeat to embellish the other end of the tube.

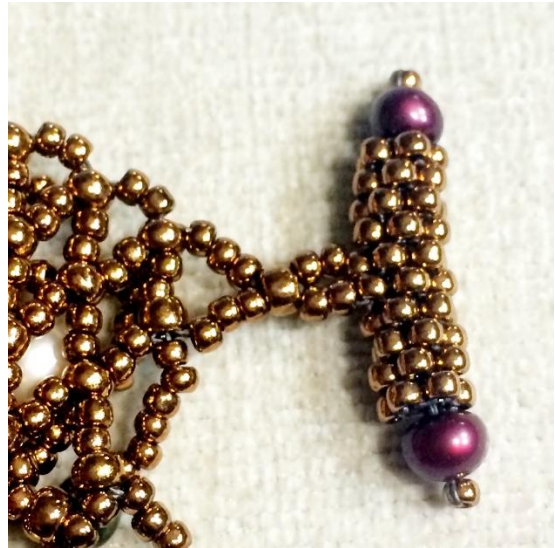
Pass back and forth through the two end embellishments twice more to reinforce; secure the thread and trim.

Attach the Toggle Bar

Start about 1 foot of new thread that exits from the top size 8° at one end of the netted base.

Pick up 2 size 11° seed beads, 1 size 8°, and 2 size 11° beads. Pass through 2 size 11°s in the center of the toggle bar.

Pick up 2 size 11° and then pass back through the last size 8° added and the next 2 size 11°. Reinforce by passing through all the beads in the connection twice more. Secure the thread and trim.



Toggle Loop

Start about 2 feet of new thread that exits from the top size 8° at one top on one end of the netted base.

Pick up 2 size 11°, 1 size 8°, and 27 size 11°. Pass back through the size 8° and check your loop around the toggle bar. You may need to adjust the exact number of beads in your loop depending on the brand of your beads.

Pick up 2 size 11° and pass back through the next size 8° down on the netted base.

Weave through beads to exit from the first size 11° of the 27. String 1 size 11°, skip a bead, and then pass through the next size 11°. You're peyote-stitching around the loop. Repeat all the way around the loop.

Repeat the entire thread path again, this time stringing 2 size 11° in each peyote stitch around the loop. Secure the thread and trim.

Tips

--When adding the fringe, hold the piece so that only the small section you're working with is exposed. Tuck the rest in your non-dominant hand to help you from catching your thread in the fringes.

--When securing new thread or ending an old one, work on the back of the netted base to help you from catching your thread in the fringes.